

Document	Guide to using Globus for File Transfers
Platform	Mac, Windows
Includes	General Description of Globus Creating a GlobusID Configuring Globus Connect Personal Endpoints Transferring files with Globus

General Description of Globus [\(top\)](#)

The Globus file transfer service provides high-performance, secure, file transfer and synchronization between endpoints and allows you to share your data with other Globus users.

An “endpoint” is one of the two file transfer locations (source and destination) between which the files can move. There are Institutional endpoints, such as the NMRbox endpoint, and personal endpoints that you create and configure on your own computers (laptops, office computers, home computers, etc.).

The NMRbox endpoint already exists and once you create your own personal endpoints you can manage data transfers from your NMRbox files to your personal computers. Transfers can be performed where files are transferred between endpoints or in a synchronization mode where files are synced between endpoints.

Once configured the Globus Connect Personnel can remain running on your personnel computers which allows you to manage file transfers between any of your personnel computers and your NMRbox files from any device even if you are not located at the endpoint. You can even manage file transfers between your own personnel computers as well. Another excellent feature of Globus is that in most cases it will circumvent firewalls, for example I utilize Globus to transfer files between my office and home computers both of which are on private networks and behind firewalls.

Creating a GlobusID [\(top\)](#)

In order to use Globus you will need a GlobusID. The directions below are for creating a GlobusID, but there is a chance you do not need one. Some Universities and National Labs support signing onto Globus with your institutional login. You can check if your institution is supported at <https://globus.org/app>. If your institution is not present, don't fret, signing up for a GlobusID is very simple.

- Go to <https://www.globusid.org/create> and fill out the form to create your Globus ID

globus ID

Create a Globus ID [Already have a Globus ID? Log In](#)

Username: johndoe @globusid.org
Not available, but these are: johndoe2 johndoe3
 Usernames may contain both letters and numbers, but must begin with a letter and be between 3 and 31 characters long.
 NOTE: this is an ID you are creating — not a working e-mail address

Password: [masked]
Better passwords are longer, use mixed-case letters with punctuation and numbers.
 This password is **moderately strong**
 show password

Full Name: John Doe

E-mail: john.doe@uchc.edu

This account will be used for:

- non-profit research or educational purposes
- commercial purposes

Organization: UConn Health

I have read and agree to the Globus [Terms of Service and Privacy Policy](#)

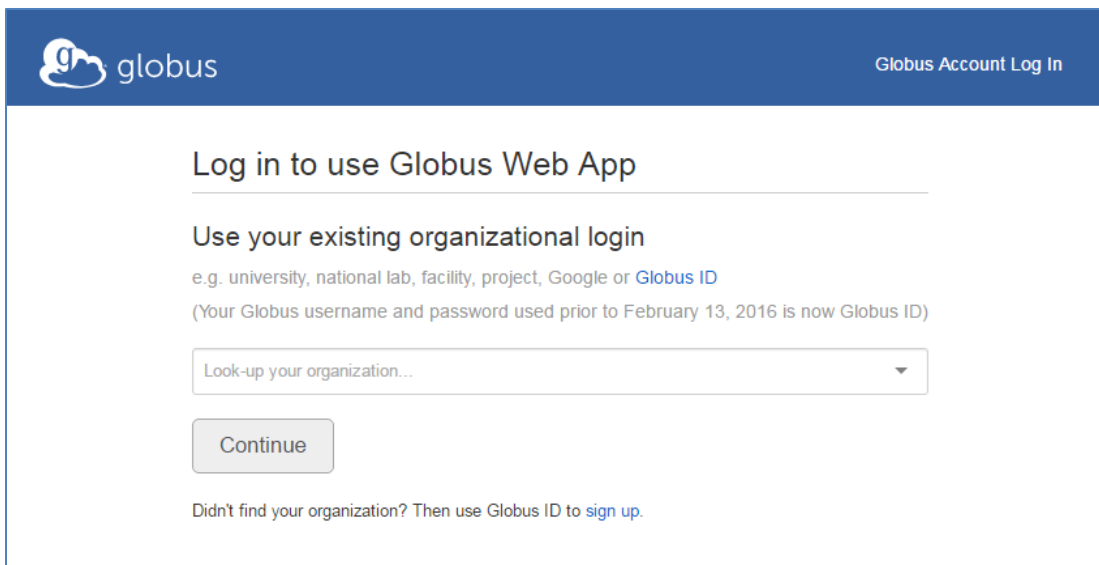
please e-mail me updates about Globus

- You will receive an email from support@globus.org with instructions and a Verification Code. Your browser will be taken to <https://www.globusid.org> and at the top there will be link “Verify Your E-mail Address”.
- Click on the “Verify Your E-mail Address” link
- Copy and paste the verification code from the email to the dialog box
 - You should now be logged in to Globus
 - You will also receive an email from Globus with links to instructions for connecting personal computers ([Mac](#), [Windows](#), [Linux](#)), [transferring files \(overview\)](#), [sharing files](#), [publishing data](#), and [frequency asked questions](#).

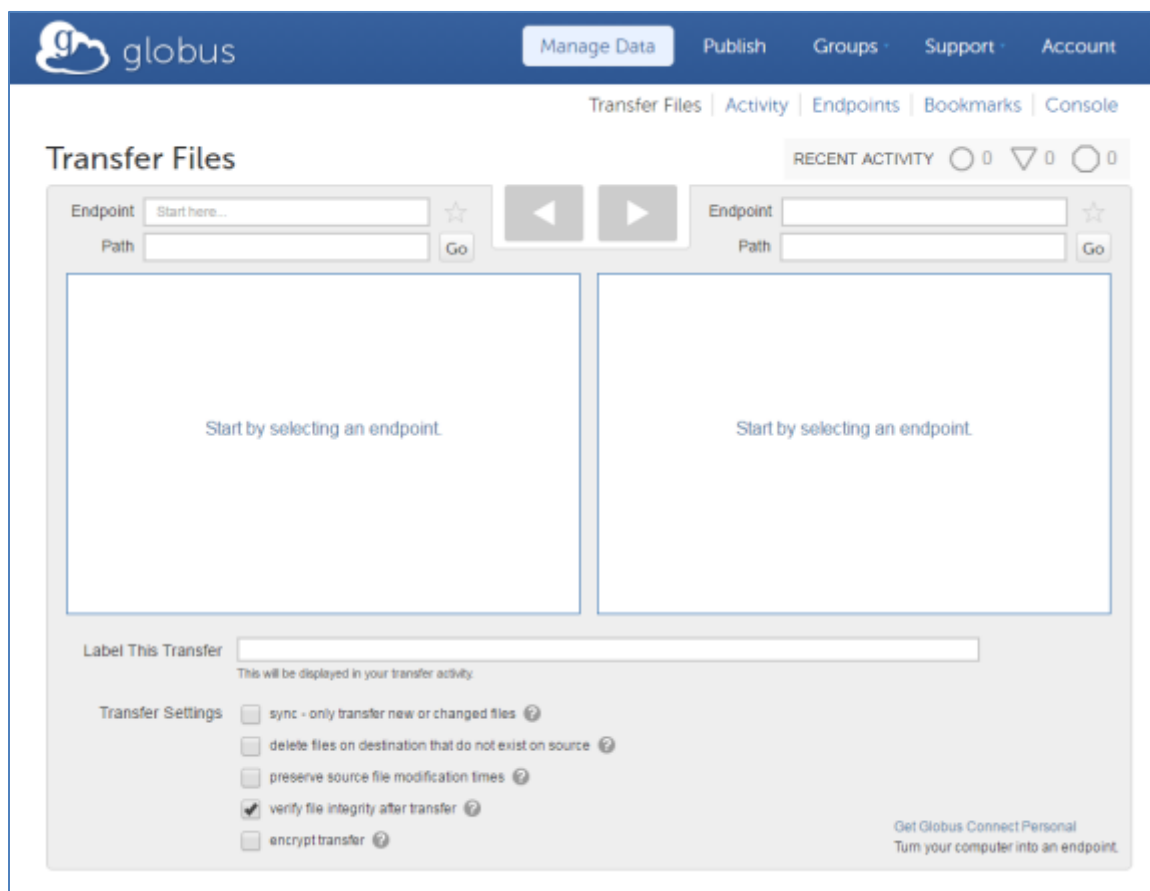
Configuring Globus Connect Personal Endpoints [\(top\)](#)

To install Globus Connect Personal on your personal or work computer follow these steps.

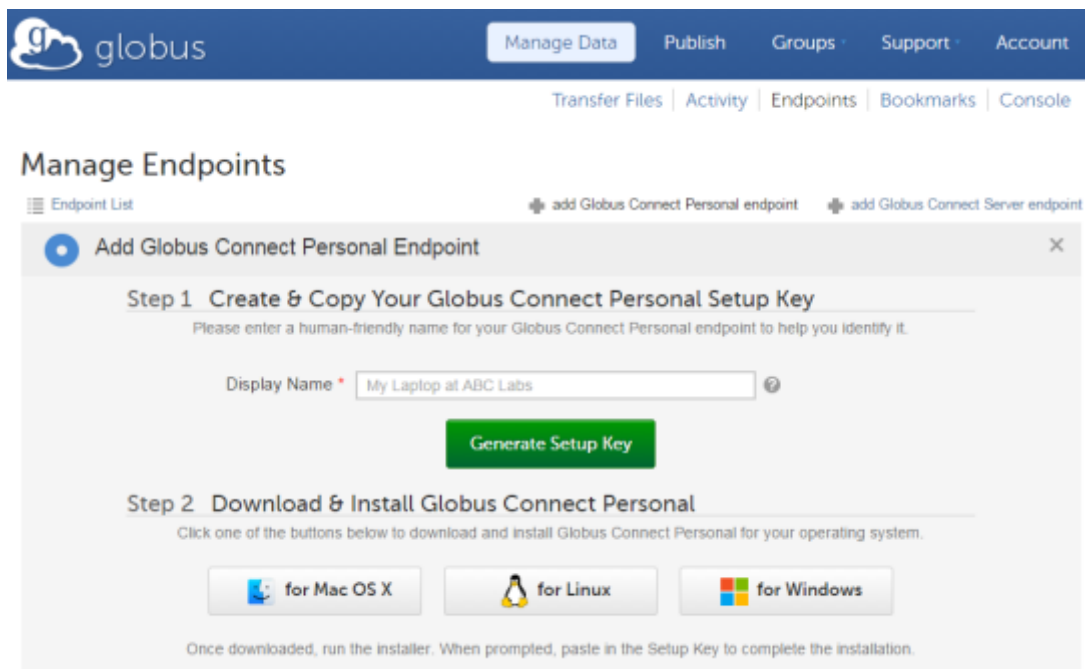
- Go to <https://www.globus.org> and select “Log In”
- Login with your institutional login if you are at a supported institution or click on GlobusID and login with your Globus ID



- The screen below will appear. Make sure that the “Manage Data” tab is selected and then select “Endpoints”



- Use the Plus button for “add Globus Connect Personal endpoint” and the following should appear



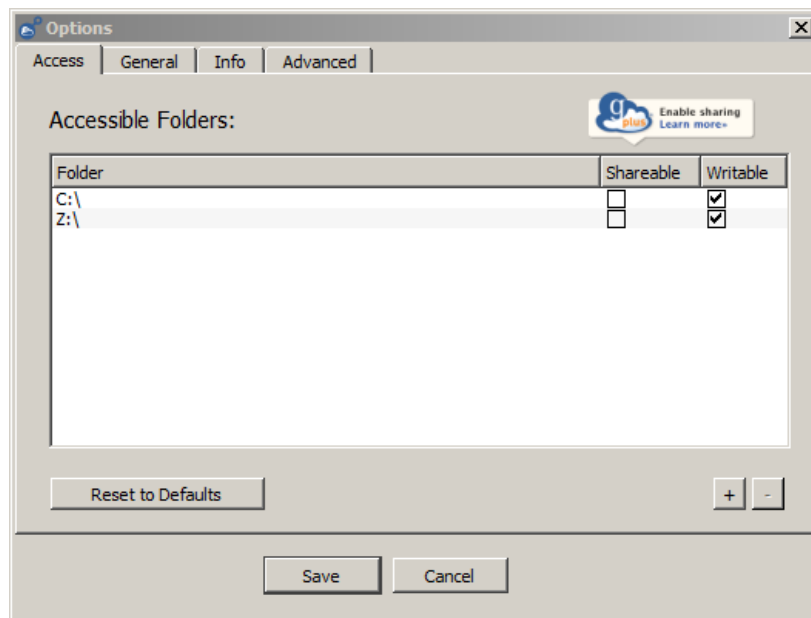
- Enter a Display Name and select Generate Setup Key and then press copy and leave the page open just in case we need to come back to the Setup Key later.
- Select the Install type which will download the installer for your platform.
- Run the installer. Note that in Windows if you are not using an administrator account you should go to the Downloads folder, right mouse click the downloaded installer, and select "Run as Administrator".
- Once installed run Globus Connect Personal. The Globus Connect Personal icon should appear on your taskbar.

Follow the remaining instructions based on your operating system.

Windows

- Open Globus Connect Personal by right mouse clicking on the Globus Icon and select Options.

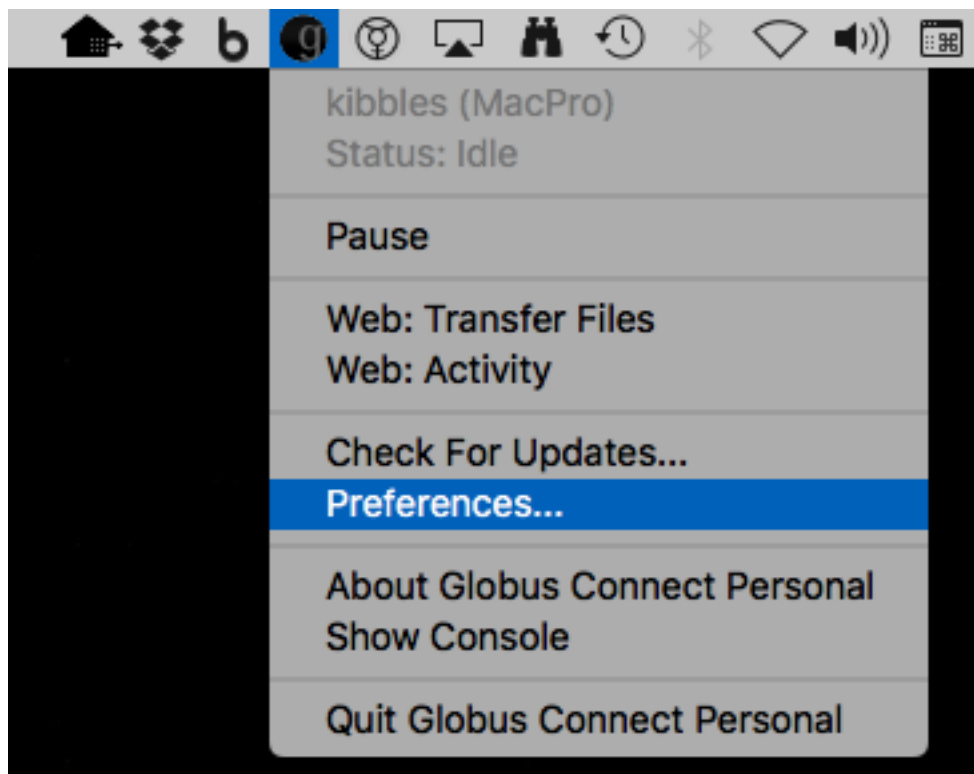




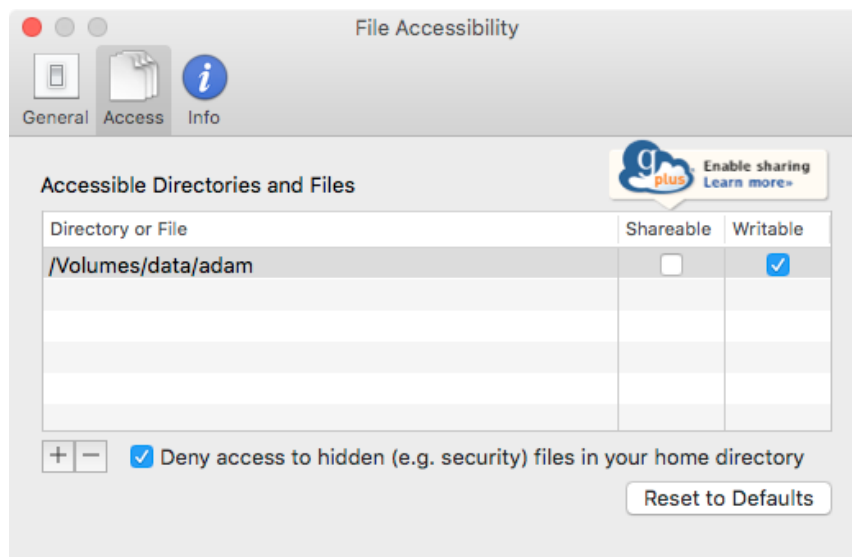
- Use the + button to add a Folder(s) to be accessible and make sure that Writable is checked.
- Under General select “Run when Windows starts” and change the Home Folder if desired and click Save

OSX

- Right click on the menubar icon and select “Preferences...”



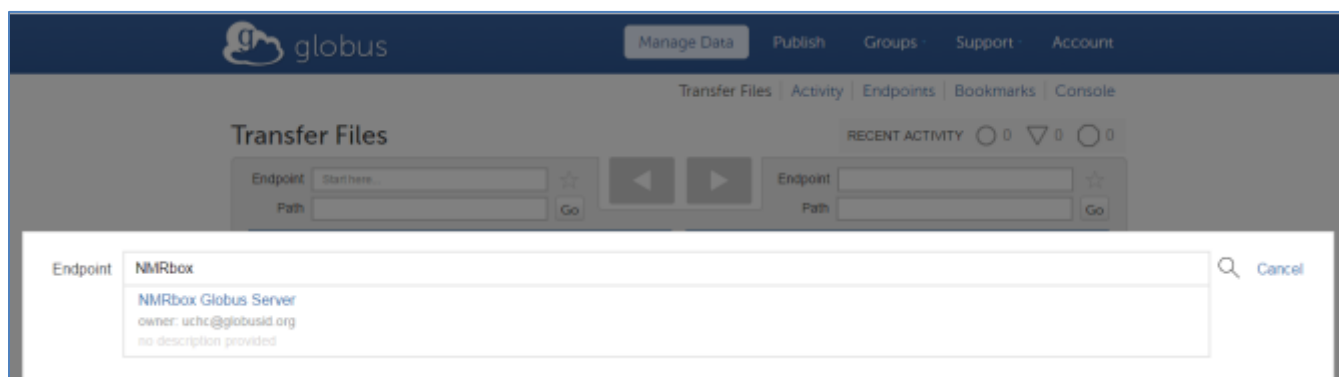
- Click on the “Access” tab and add directories and/or files to provide access to Globus. Make sure “Writeable” checkbox is marked.



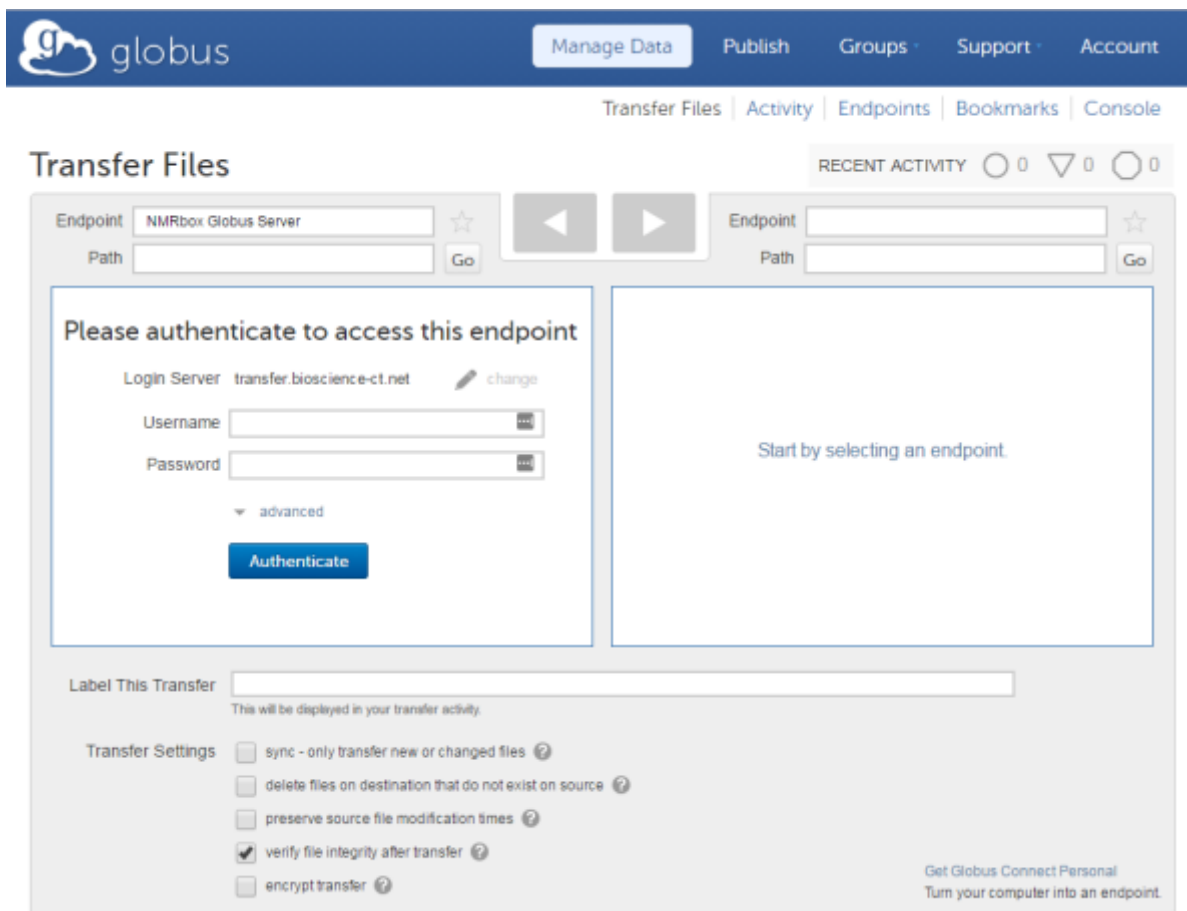
- If you want Globus to launch when you login, use: Apple Menu > System Preferences > Users & Groups > Login Items

Transferring files with Globus [\(top\)](#)

- Login to Globus and click on “Start here ...” in the Endpoint dialog box. Then in the search dialog box type NMRbox and the “NMRbox Globus Server” should be listed – select it.



- You be presented with a dialog box requesting your NMRbox Username and Password as shown below



- Enter your NMRbox username and password and then click Endpoint on the right-hand side. A box will open with Recently Used, Bookmarks, and Administered by Me Tabs. Select the Administered by Me Tab and select your personal Endpoint.
- Navigate to the files you want to transfer either on your personal computer or from your NMRbox account. Note that for the NMRbox Globus Server you can navigate to:
 - Your home folder: /globus/home/username
 - Your archive folder: /globus/archive/username
 - The public folder: /globus/public
 Or enter ~/ in PATH as a shortcut to /globus/home/username
- Navigate to the destination folder on the other side of the window
- Select the file or folder you want to transfer
- **CHECK the PRESERVE SOURCE FILE MODIFICATION TIMES.** This is your choice, but I like keeping the modification times the same on copying, but unfortunately this is not the default for Globus.
- Check the sync button if you want to sync data between the two endpoints and then select your sync type.
- Finally, select the Arrow at the top center to begin the transfer
- Click on the “RECENT ACTIVITY” link at the top right portion of the screen to see information about the transfer.
- You will also get an email notification upon completion or termination of the transfer. Globus transfers will attempt to complete for 24 hours before terminating.

- File transfers that are interrupted due to a lack of internet connection will begin again when the connection is re-established up to 24 hours at which point they will terminate.